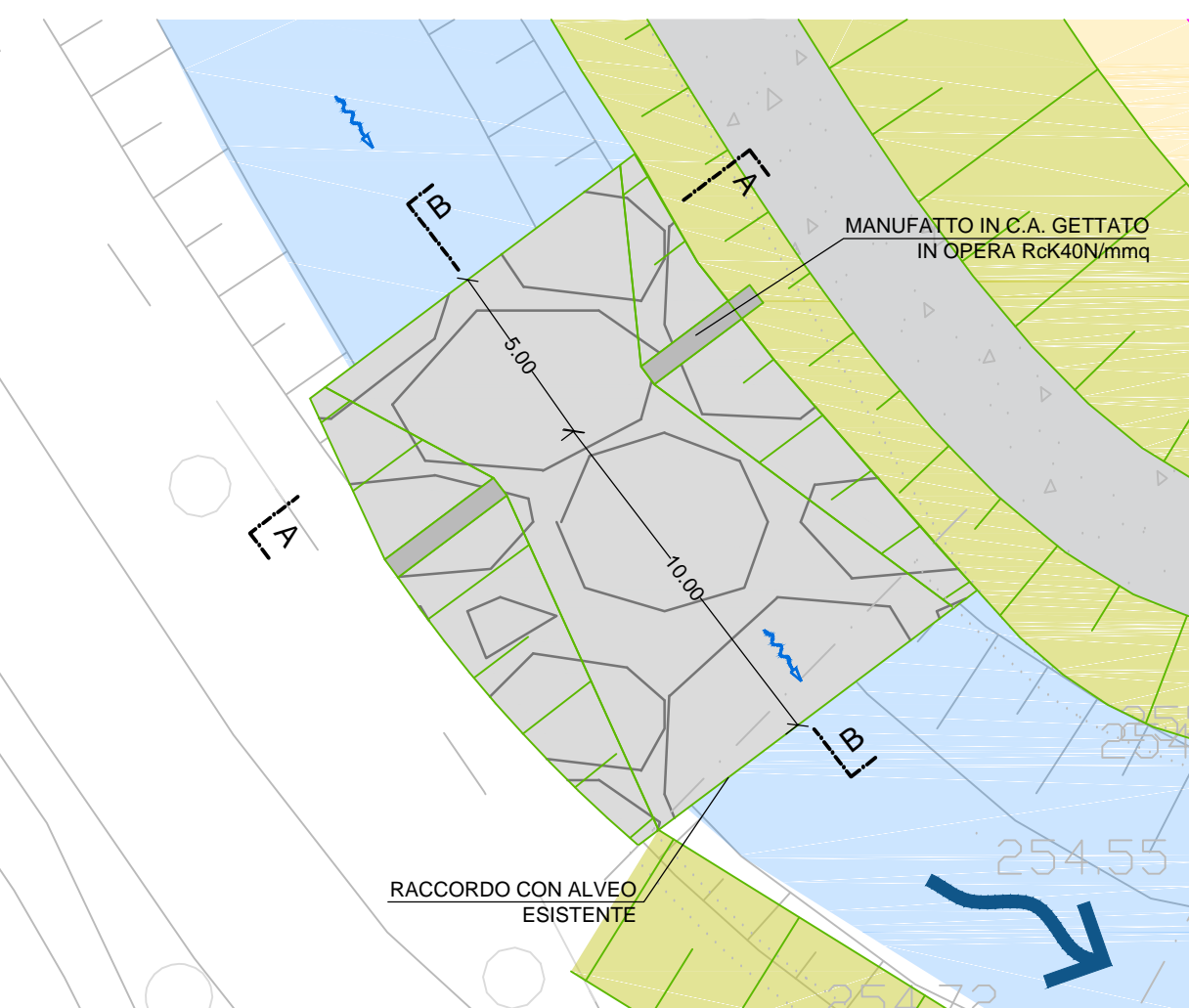
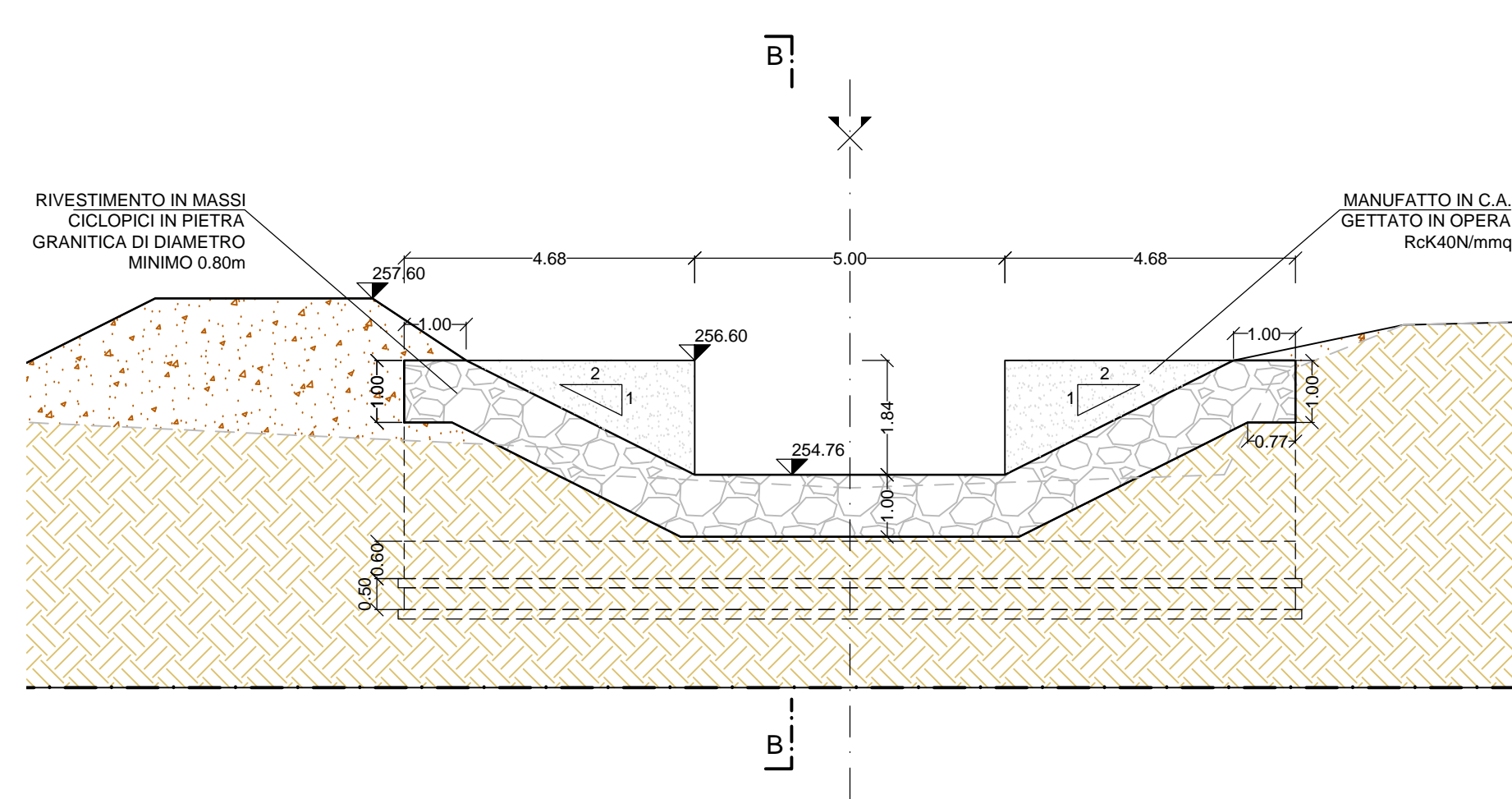


MANUFATTO DI RESTRINGIMENTO - AREA GOLENALE 1

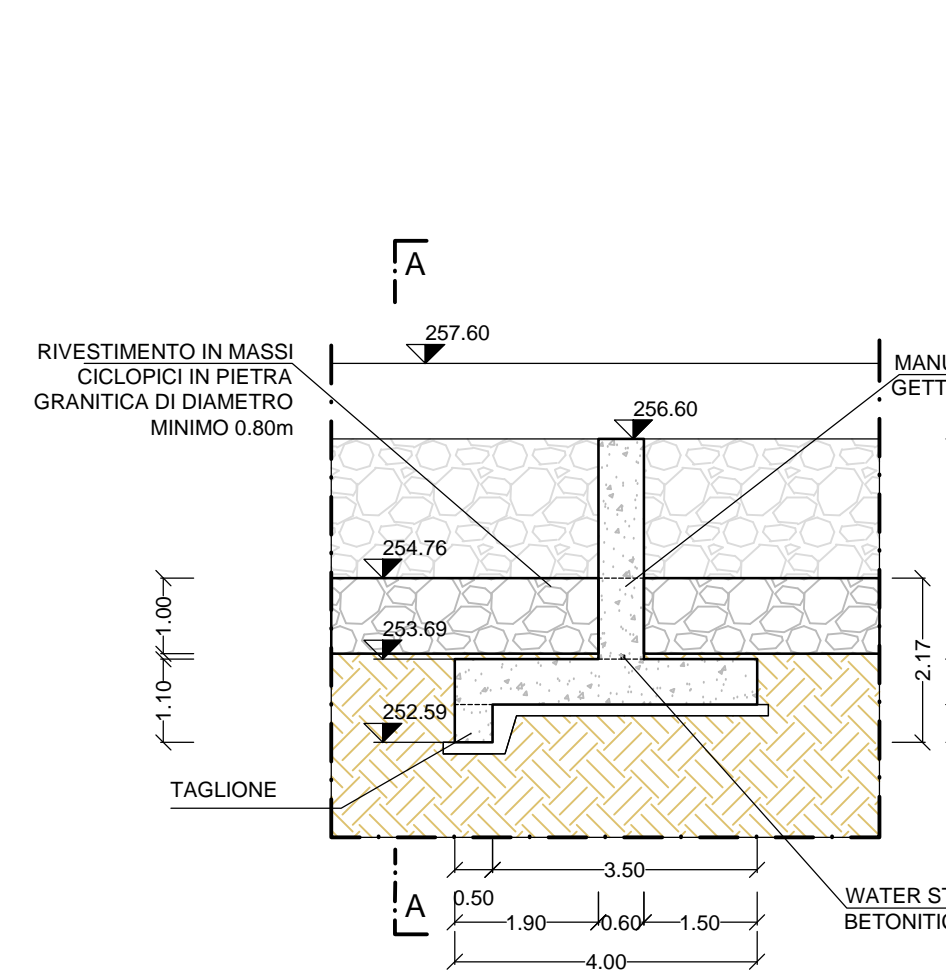
STRALCIO PLANIMETRICO



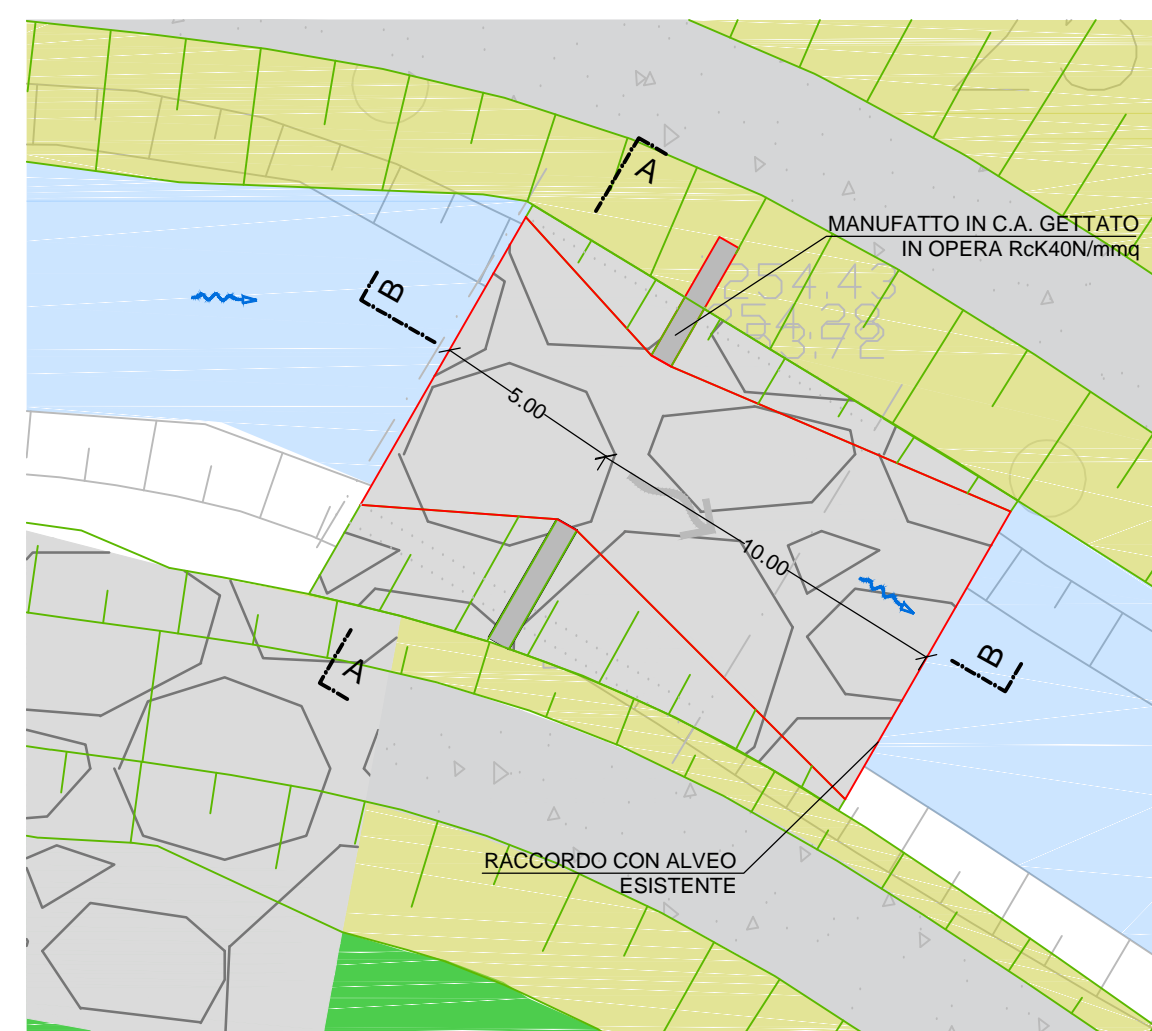
SEZIONE A-A



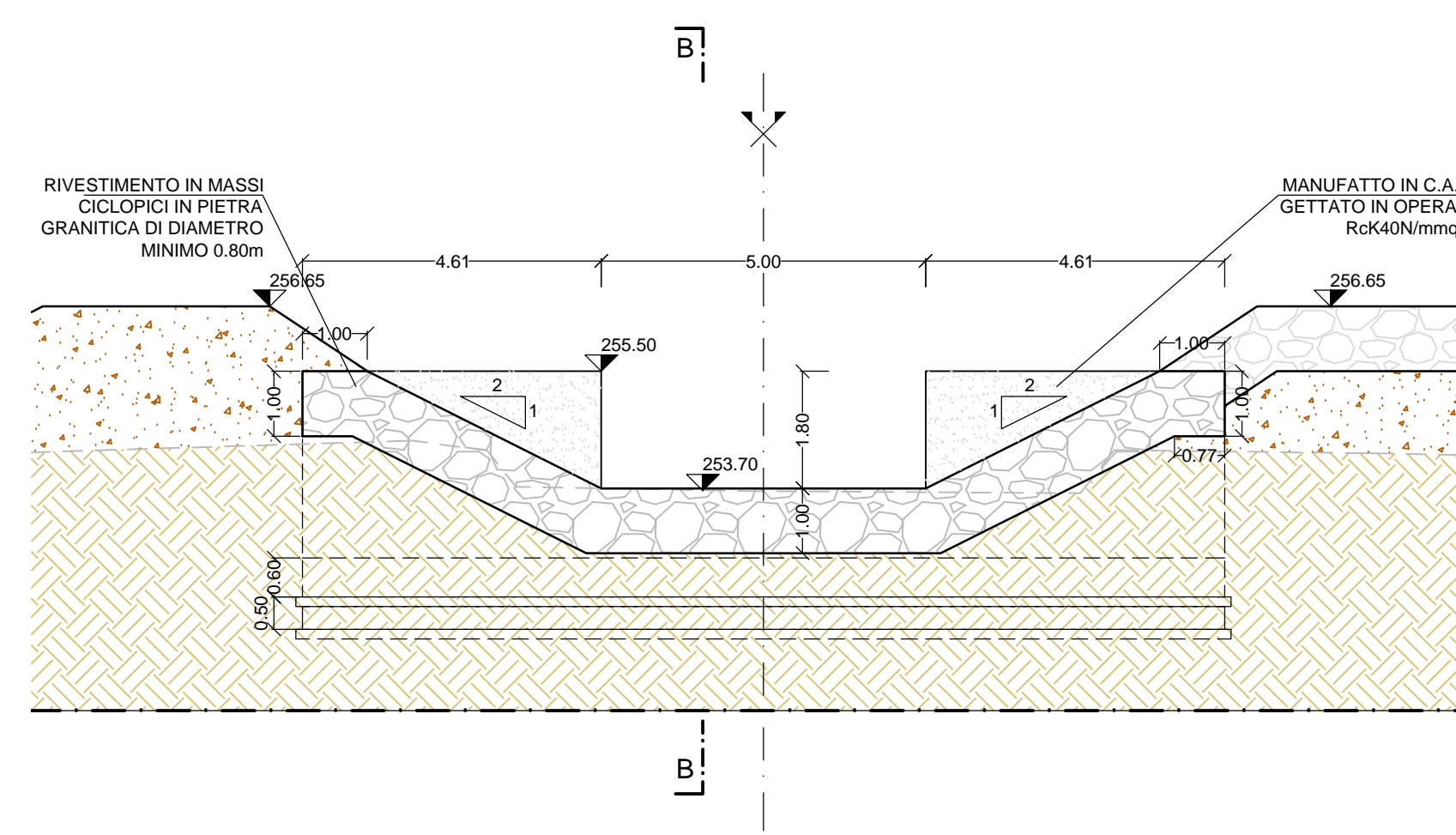
SEZIONE B-B



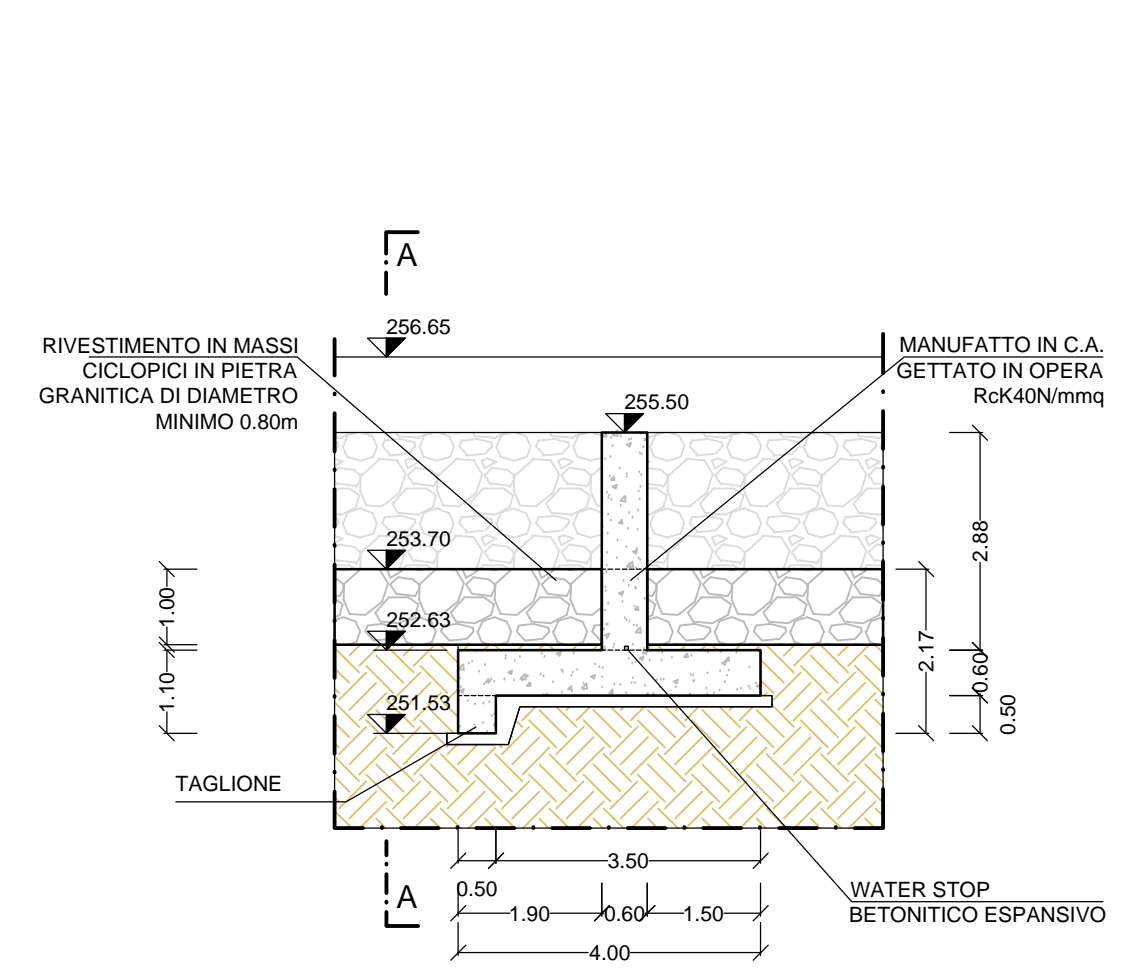
STRALCIO PLANIMETRICO



SEZIONE A-A

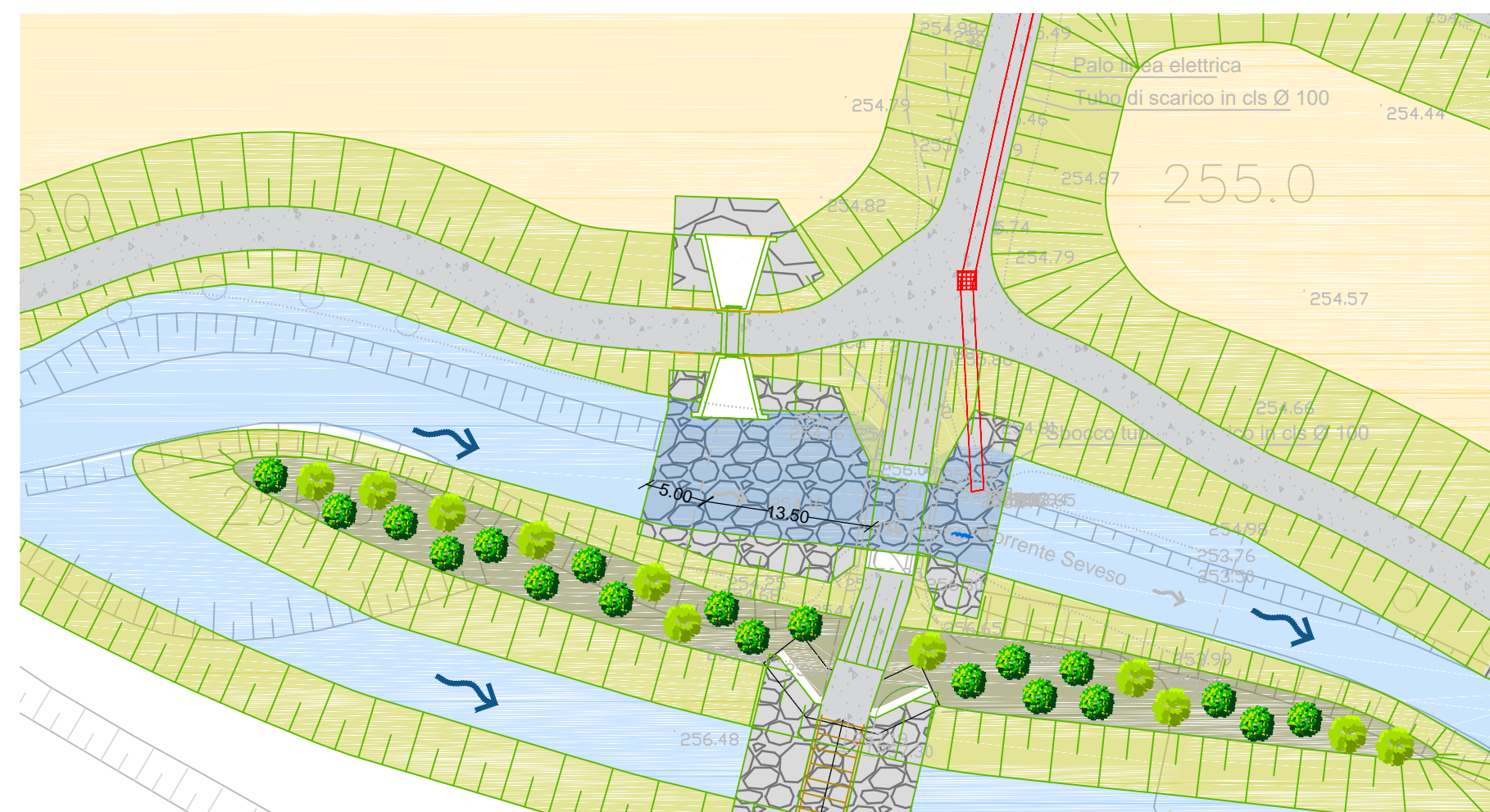


SEZIONE B-B

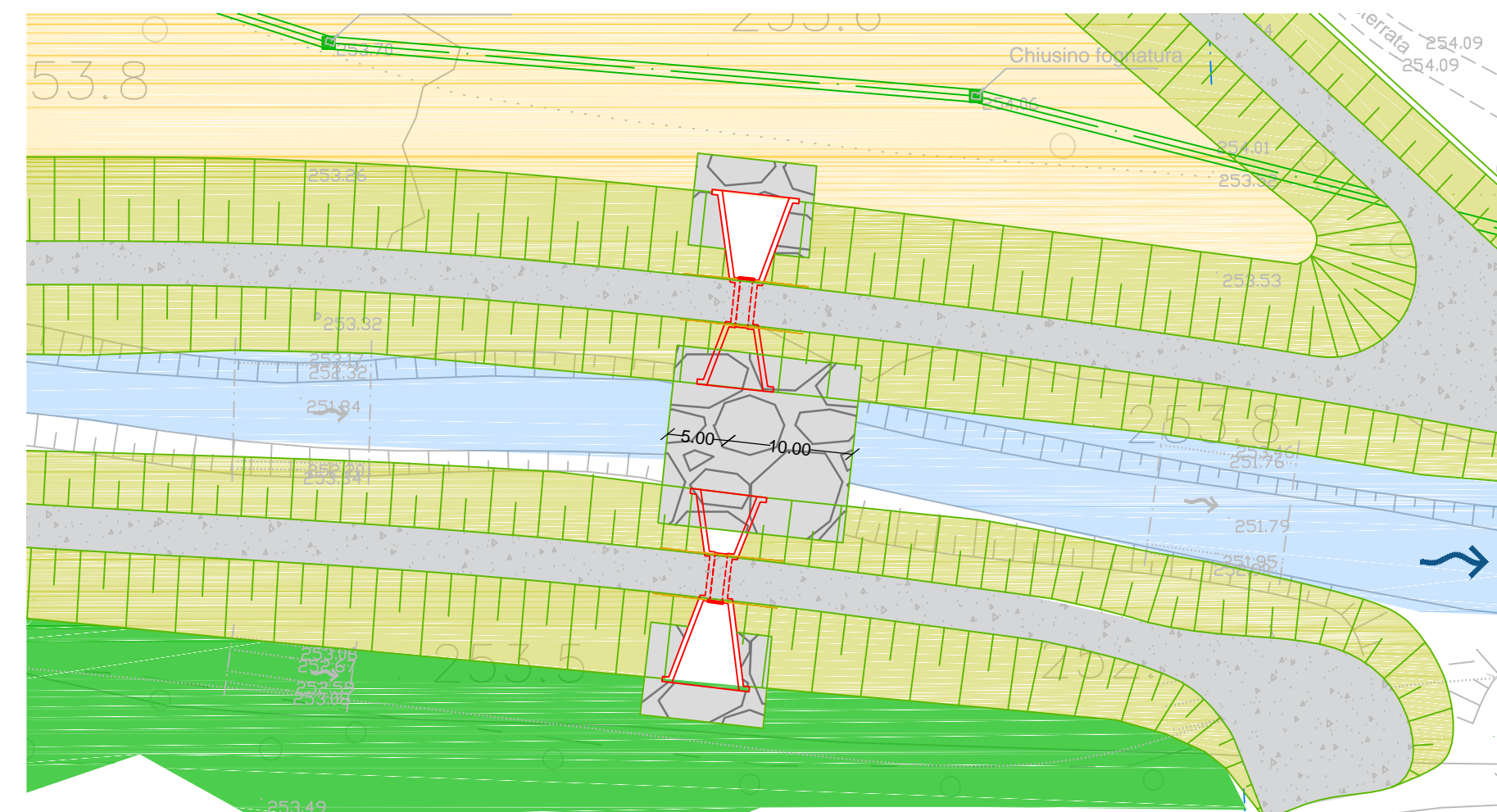


MANUFATTO DI RESTITUZIONE - AREA GOLENALE 1

STRALCIO PLANIMETRICO

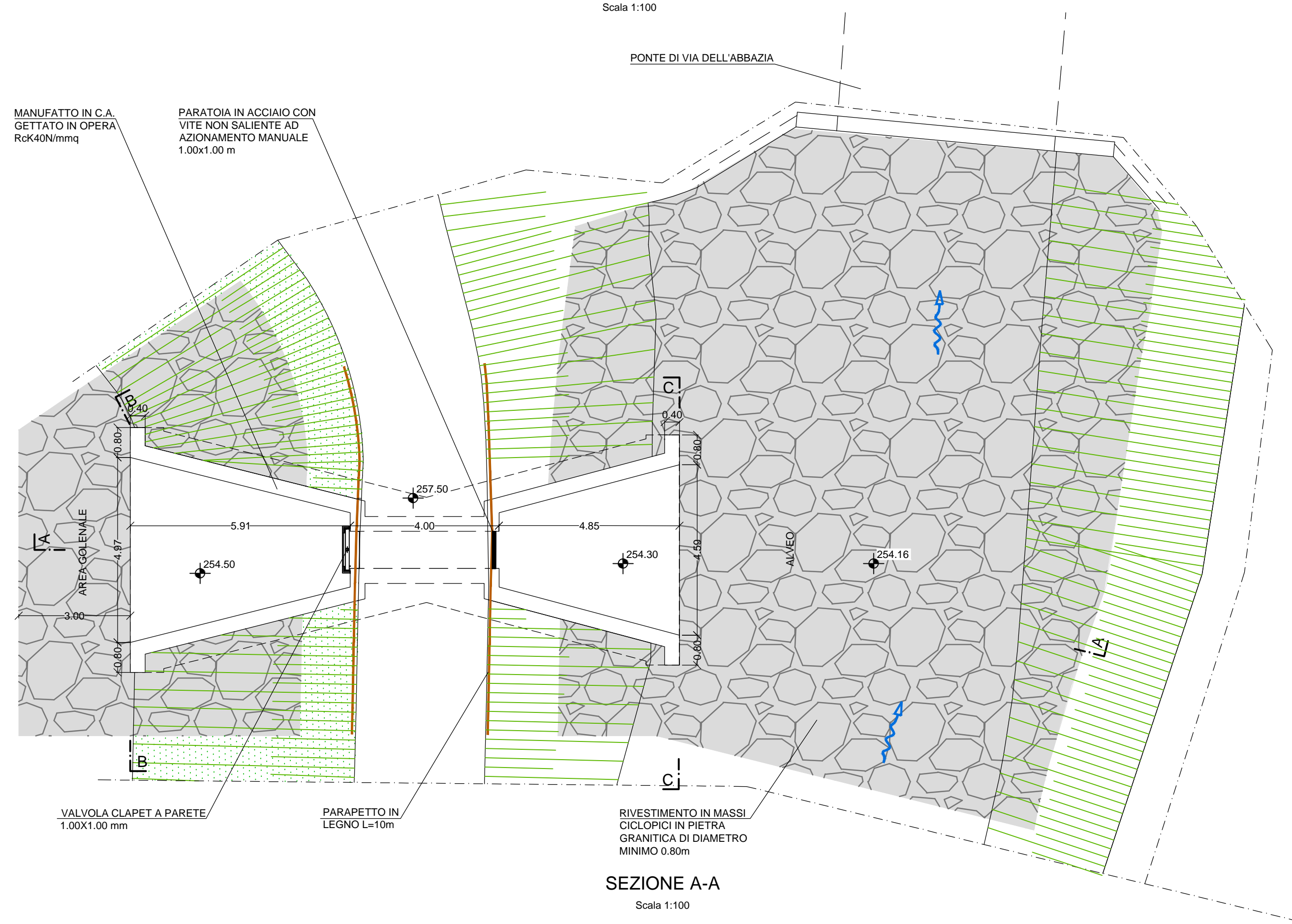


PIANTA

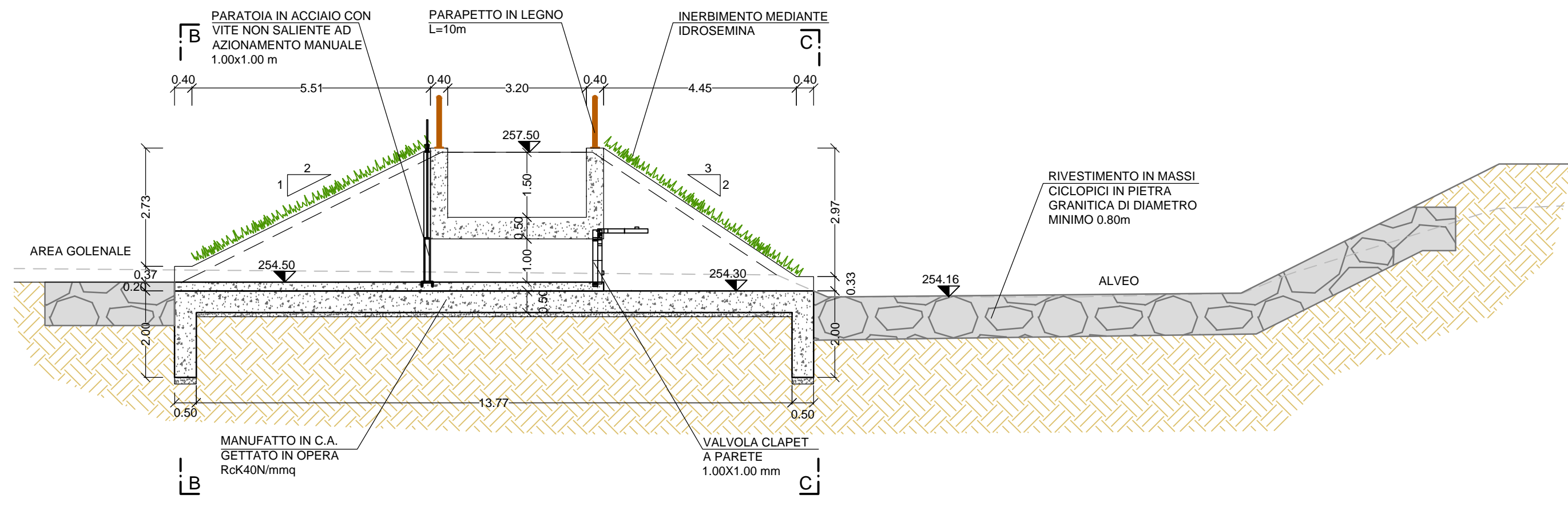


MANUFATTO DI RESTITUZIONE - AREA GOLENALE 2

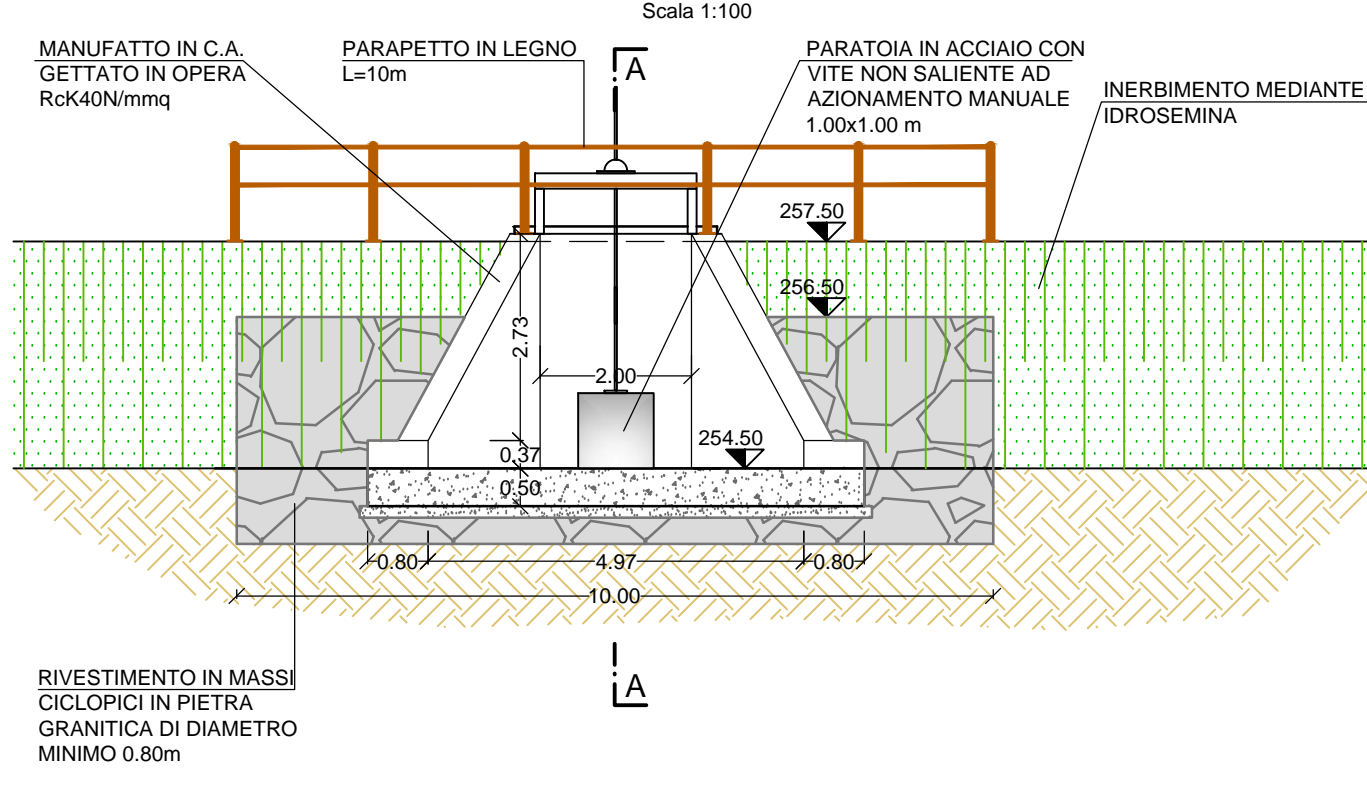
STRALCIO PLANIMETRICO



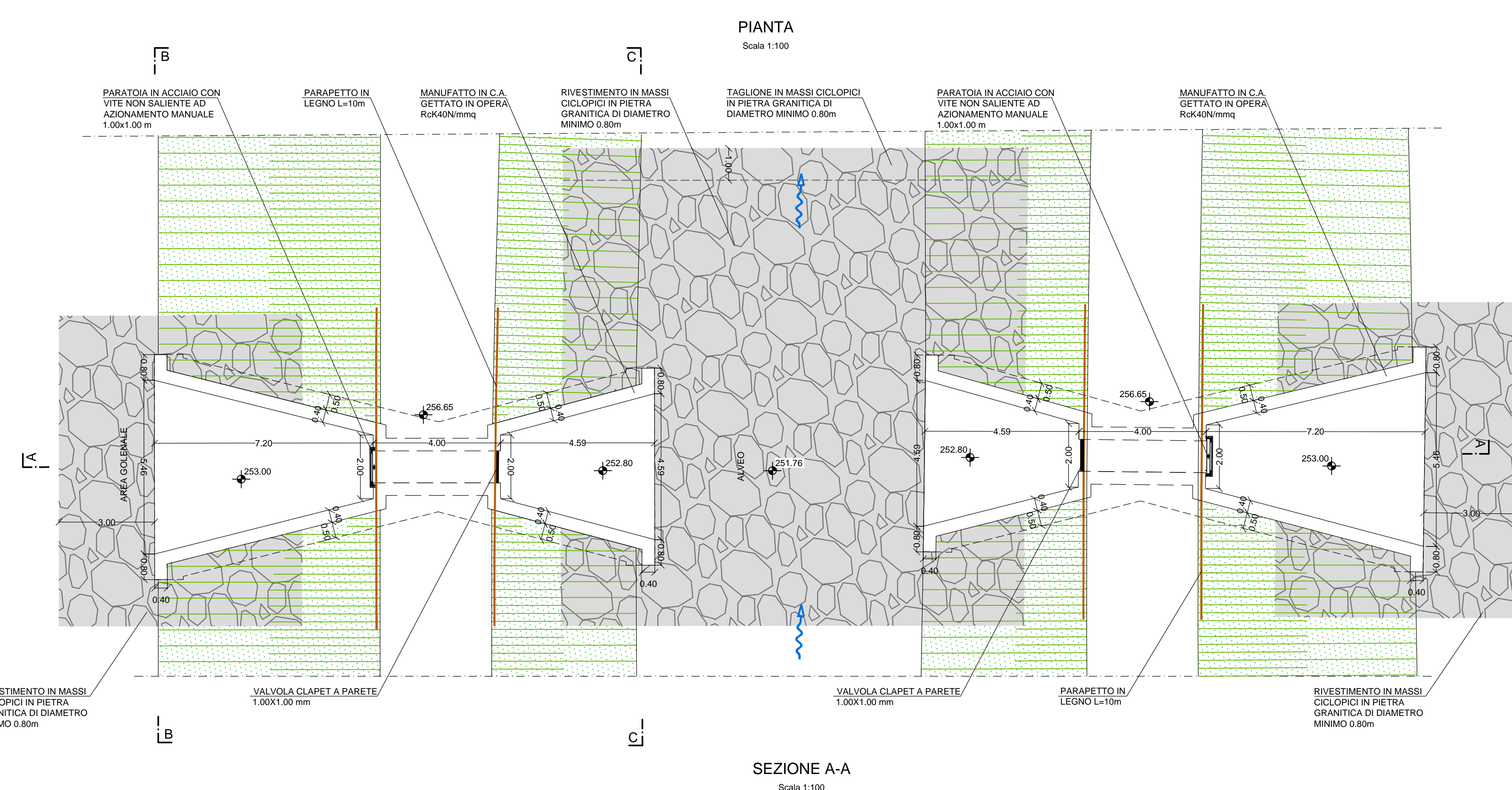
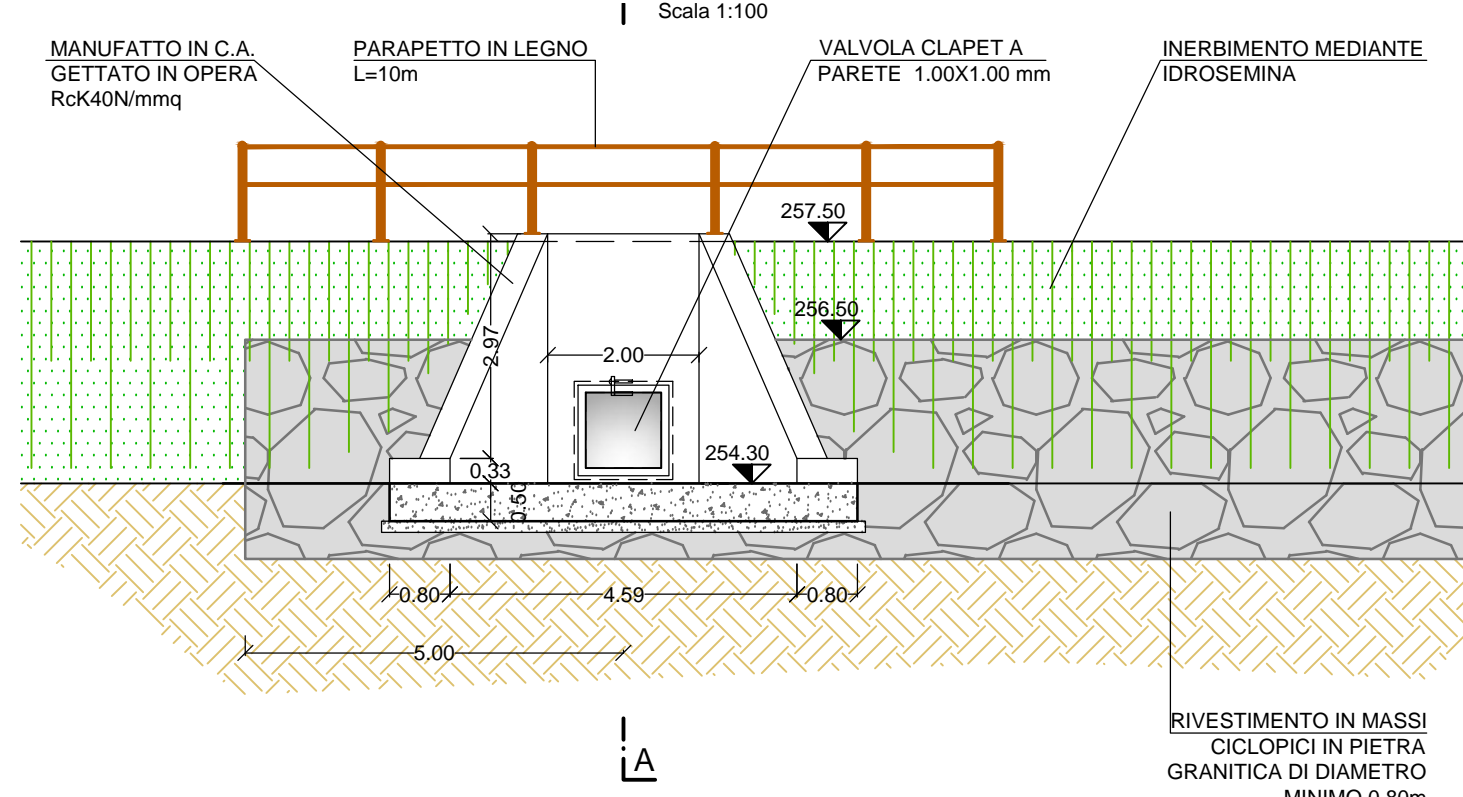
SEZIONE A-A



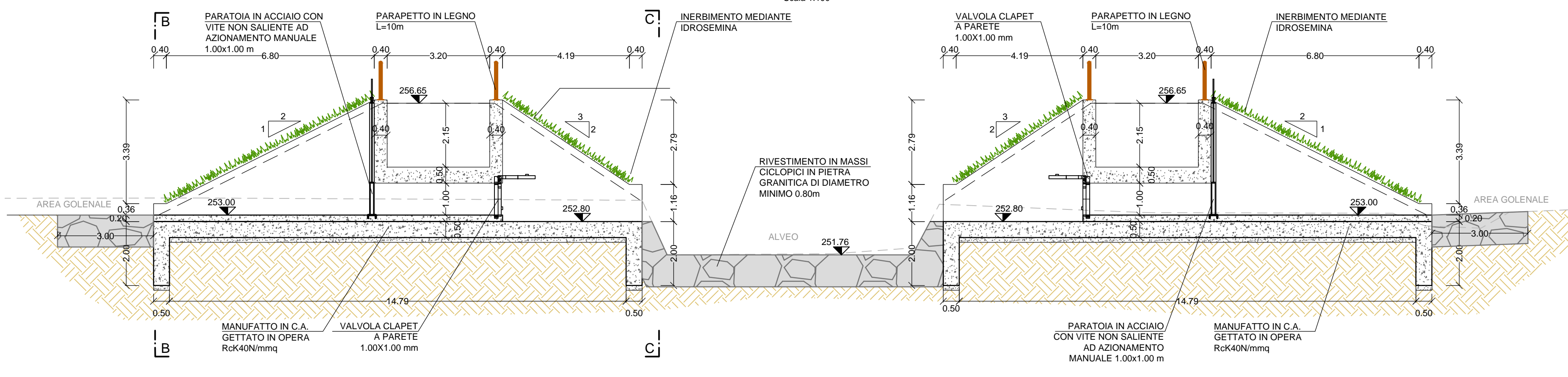
SEZIONE B-B



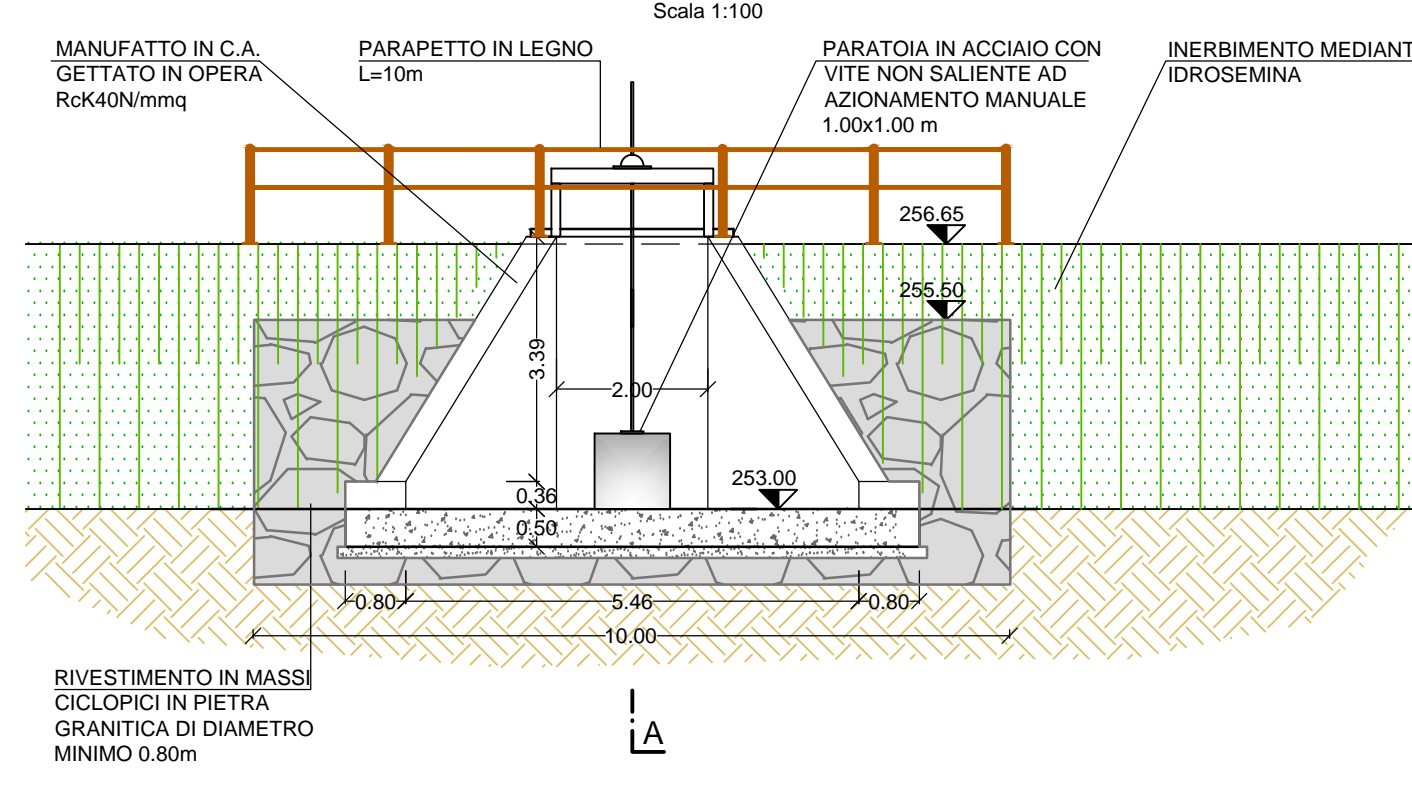
SEZIONE C-C



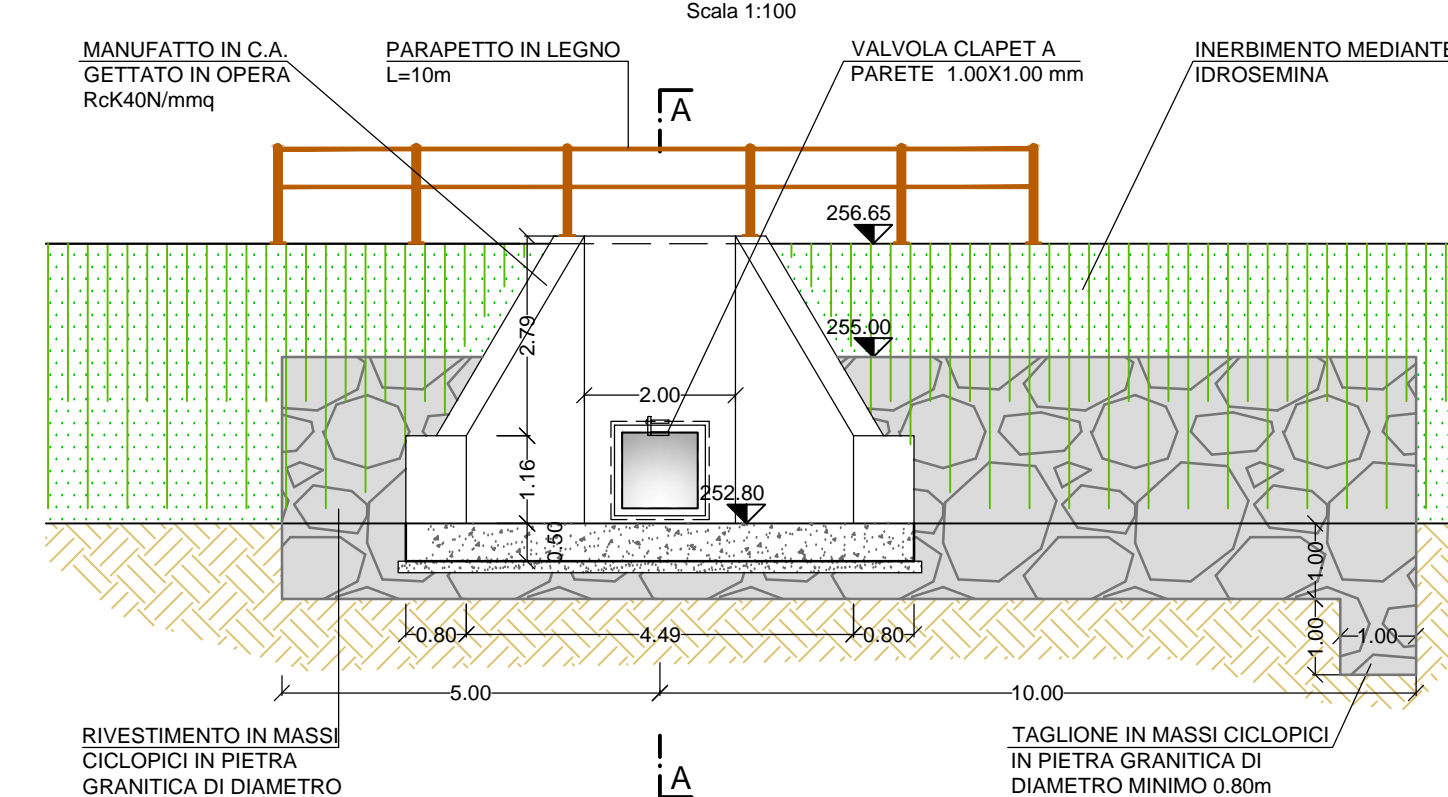
SEZIONE A-A



SEZIONE B-B



SEZIONE C-C



AREE GOLENALI DEL FIUME SEVESO NEI COMUNI DI VERTEMATE CON MINOPRIO, CARIMATE E CANTÙ

PROGETTO DEFINITIVO

02	04/2016	Emissione a seguito di Decreto regionale n. 5351 del 16/04/2016. Pronuncia di compatibilità ambientale.			
00	06/2016	Emissione a seguito di nota AIPo prot. n. 00015532/2016 del 15.06.2016			
INDICE	DATA	MODIFICHE	DISGN.	CONTR.	APPROV.
AREA GOLENALE 1 e 2					
Manufatti					
I PROGETTISTI: Dott. Ing. Denis Cerini Dott. Ing. Alessandro Ballo Dott. Ing. Giacomo Galimberti Dott. Ing. Gaetano di Franca GEOLOGIA: Dott. Geol. Pietro Breviglieri Dott. Geol. Efram Ghezzi			Hanno collaborato: Dott. Ing. Daniele Recalcati Dott. Ing. Roberta Romiti Geom. Enrico Maddalena Consulenza geotecnica: Dott. Geol. Roberto Prevati		SCALA: INDICATA
STUDIO MAJONE INGEGNERI ASSOCIATI Via Roma, 7 - 20133 Milano - tel. +39.02.70120818 fax +39.02.70120903 Via Cavallotti, 16 - 43121 Parma - tel. +39.0521.508419 fax +39.0521.221022			STUDIO IDROGEOLOGICO		ELABORATO: SVS 2013
MAGGIOREPARTNER DOTT. ING. GAETANO DI FRANCA			STUDIO IDROGEOLOGICO		Giugno 2016